

**FIA** Forest Investment Account  
Forest Science Program

**BUSINESS  
PLAN**  
2006/2007





## **Business Plan 2006/2007**

**August 2006**

### **Library and Archives Canada Cataloguing in Publication Data**

British Columbia. Forest Investment Account. Forest Science Program.  
Business plan. -- 2005/2006-

Annual.

ISSN 1712-9796 = Business plan (British Columbia. Forest Investment  
Account. Forest Science Program)

1. British Columbia. Forest Investment Account. Forest Science Program –  
Periodicals. 2. Sustainable forestry – British Columbia – Research – Finance –  
Periodicals. 3. Sustainable forestry – British Columbia – Management –  
Periodicals. I. Title. II. Title: FIA, Forest Investment Account, Forest Science  
Program business plan.

SD387.S87B74

354.5'5274'0971105

C2005-960038-1

More information on the FIA Forest Science Program can be found at  
[www.fia-fsp.ca](http://www.fia-fsp.ca)

---

## Table of Contents

1	Introduction.....	1
1.1	FIA Forest Science Program .....	1
1.2	FIA Forest Science Board.....	1
2	FIA-FSP Activities 2006/07 .....	3
2.1	Forest Science Board .....	3
2.2	Research .....	4
2.3	Extension .....	11
2.4	Forest Science Board .....	12
2.5	Administration .....	13
3	FIA-FSP Budget 2006/07 .....	14
Appendix:	Recommended Projects 2006/07 .....	15

---

## List of Tables

Table 1	Forest Science Board membership structure .....	1
Table 2	Forest Science Board members 2006/07 .....	2
Table 3	Forest Science Board committees 2006/07 .....	2
Table 4	Recommended Sustainability Program allocations by themes and topics .....	6
Table 5	Recommended Timber Growth and Value Program allocations by themes and topics .....	6
Table 6	Recommended allocations to research related to mountain pine beetle .....	7
Table 7	Recommended continuing projects (approved in 2005/06), based on progress to date .....	8
Table 8	Recommended continuing projects (approved in 2004/05) by interim research themes .....	8
Table 9	Number and value of research projects funded in 2006/07, by duration and program .....	10
Table 10	Number and value of mountain pine beetle research projects funded in 2006/07, by duration and program .....	10
Table 11	Number and value of LTRI projects funded in 2006/07, by duration.....	11
Table 12	Provincial Forest Extension Program budget summary, 2006/07 .....	12
Table 13	FIA-FSP budget allocation 2006/07.....	14
Table A1	Recommended allocation of FIA-FSP research funding 2006/07.....	15

---

## List of Figures

Figure 1	Forest Science Board and committees relationships .....	2
----------	---	---



# 1 Introduction

## 1.1 FIA Forest Science Program

The Forest Investment Account (FIA) is a provincial government mechanism for promoting sustainable forest management in British Columbia. It is founded upon a sub-vote of the Legislature, authorizing the Minister of Forests and Range to fund certain forest management activities. The FIA comprises seven programs: Land-Base Investment, Crown Land-Use Planning Enhancement, Tree Improvement, Small Tenures, International Marketing, Product Development, and Forest Science.

The FIA Forest Science Program (FIA-FSP) funds a range of research, knowledge synthesis, and extension activities that contribute to the three FIA goals:

- supporting sustainable forest management practices
- improving the public forest asset base
- promoting greater returns from the utilization of public timber.

The *FIA Forest Science Program Strategic Plan 2004-2008* sets out the vision, strategic goals, governance structure, planning framework, and forest science priorities for the FIA Forest Science Program. This document describes the activities that constitute the FIA-FSP Business Plan for 2006/07.

For more information on the FIA-FSP, visit [www.fia-fsp.ca](http://www.fia-fsp.ca).

## 1.2 FIA Forest Science Board

A 14-member Forest Science Board advises the Deputy Minister of Forests and Range (MoFR) on FIA-FSP strategies and priorities. The Board comprises users and providers of scientific knowledge drawn from industry, governments, First Nations, and the forest science community. The Board composition is set out in Table 1.

**Table 1 Forest Science Board membership structure**

Affiliation	Members
Provincial Government	3
First Nations (1 Coast, 1 Interior)	2
Forest Sector (2 Coast, 2 Interior)	4
Federal Government (Canadian Forest Service)	1
Forest Science Provider Agencies (universities, government and private organizations)	4
	<b>14</b>
<i>Ex-officio (non-voting)</i>	
PricewaterhouseCoopers LLP	1
Ministry of Forests and Range	1
Provincial Forest Extension Provider	1
Extension Specialist	1

Table 2 lists Board members for 2006/07.

**Table 2 Forest Science Board members 2006/07**

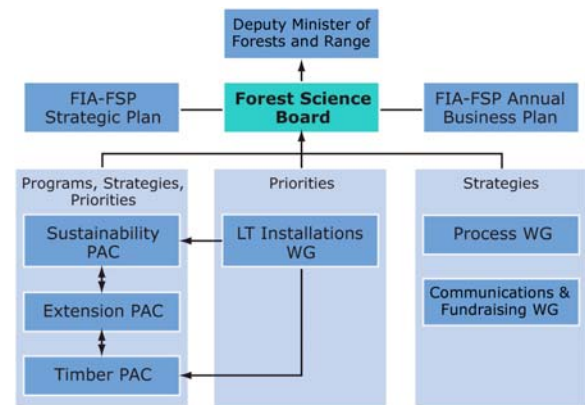
Board Members	Affiliation
Bill Bourgeois, Chair	Forest Sector (New Direction Resource Management Limited)
Ralph Archibald	Provincial Government (Ministry of Forests and Range)
Wayne Martin	Provincial Government (Ministry of Forests and Range)
Art Tautz	Provincial Government (Ministry of Environment)
Gary Hogan	Federal Government (Canadian Forest Service)
Beverly Bird	Interior First Nations
Pamela Perreault	Coastal First Nations
Rod Beaumont	Interior Forest Sector (West Fraser Timber Co. Ltd.)
Diane Medves	Coastal Forest Sector (Island Timberlands)
Steve Lorimer	Coastal Forest Sector (TimberWest Forest Corp.)
Gary Hunt	Forest Science Provider (Thompson Rivers University)
Cindy Prescott	Forest Science Provider (University of B.C.)
John Mann	Forest Science Provider (Forest Engineering Research Institute of Canada)
Gerry Still	Forest Science Provider (Ministry of Forests and Range)
<i>Ex Officio Members</i>	
Michael Armstrong	PricewaterhouseCoopers LLP
Monty Locke	Ministry of Forests and Range
Chris Hollstedt	Provincial Forest Extension Provider (FORREX)
Steve Stearns-Smith	Extension Specialist (Stearns-Smith & Associates)

**Table 3 Forest Science Board committees 2006/07**

Title	Type	Chairperson
Timber Growth and Value	PAC	Jack Woods
Sustainability	PAC	Gerry Still
Extension	PAC	Steve Stearns-Smith
Long-term Research Installations	WG	Cindy Prescott
Communications and Fundraising	WG	Bill Bourgeois
Process	WG	Cindy Prescott

Figure 1 illustrates the relationships between the Board, Program Committees, and Working Groups, and the development of the FIA-FSP Strategic Plan and annual Business Plan.

**Figure 1 Forest Science Board and committees relationships**



Two types of committees support the Forest Science Board: *Program Advisory Committees* (PACs) are standing committees charged with specific responsibilities relative to their respective programs; *Working Groups* (WGs) are temporary committees established by the Board as needed to provide advice about specific issues. Table 3 lists the 2006/07 Board committees and chairs.

## 2 FIA-FSP Activities 2006/07

### 2.1 Forest Science Board

#### Strategic Planning

In addition to supporting more research and extension activities, the increase in FIA-FSP funding in 2006/07 enabled the Board to invest in further program development and analysis to ensure that the research priority-setting process builds on past investments.

In 2006/07, the Forest Science Board will approve the provincial Forest Extension Program Strategy and annual planning process, and commission an evaluation of the Provincial Forest Extension Program. The Extension strategy will address the needs of the FIA Forest Science Program, FIA Land Base Investment Program, and FIA Small Tenures Program.

Additional support will be provided to the Sustainability and Timber Growth and Value PACs to improve their annual priority-setting process. This will include an analysis of project funding to date and a synopsis of FIA-FSP-funded projects. Each PAC will also commission two or more syntheses on specific aspects of their research programs to identify knowledge gaps.

Key issues the Board will address in 2006/07 include:

- collaborating with the Ministry of Forests and Range (MoFR) to guide spending under the R&D Biophysical activity of the Mountain Pine Beetle Emergency Response: Canada-B.C. Implementation Strategy
  - investigating other organizational constructs for the FIA-FSP
  - developing a hierarchy of the management issues related to research undertaken through the Sustainability and Timber Growth and Value programs.
- incorporating First Nations representation into the Forest Science Board and integrating First Nations interests into the FIA-FSP planning framework
  - identifying research related to emerging issues
  - investigating the priority and opportunity for long-term research

#### Communications

Effective, ongoing communications with key audiences is critical to the success of the Forest Science Board and the FIA Forest Science Program. In 2006/07, the Forest Science Board will:

- assess and update the FIA-FSP Website and improve the integration of the PricewaterhouseCoopers (PwC), MoFR, Forest Research Extension Partnership (FORREX), and FIA-FSP Websites
- publish the 2006/07 Business Plan and 2005/06 Annual Report
- make presentations to assist with fundraising and profiling the FIA-FSP
- submit advertising and articles on FIA-FSP progress to forest science user and provider magazines and newsletters
- update and mount the FIA-FSP display at conferences and other key events
- prepare a rack card and brochure on the FIA-FSP for distribution with the display

- support communication with First Nations communities about the role of First Nations representatives on the Board and how First Nations interests will be incorporated in the FIA-FSP.

## **Fundraising**

The Communications and Fundraising Working Group will continue to seek opportunities to meet with senior government and industry officials and highlight the strategic direction and accomplishments of the program.

Building on its success with mountain pine beetle (MPB) research, the Board will promote the inclusion of land-based research as a component of new provincial initiatives such as climate change and ecosystem-based management.

The funding increase to FIA-FSP in 2006/07 will advance some themes in the Sustainability Program. However, significant progress requires a consistent level of increased support. To support its case, the Board will commission a comparative summary of forest research investment in British Columbia and other Canadian provinces.

The Board will recommend the funds required to support the FIA-FSP Strategic Plan to the Forest Investment Council for consideration in its allocations for 2007/08. The Board will request notification of such funding by early October 2006.

## **Process Improvement**

PwC will maintain a process of continuous improvement in 2006/07, gathering feedback from proponents and reviewers to strengthen the FIA-FSP Research Call for Proposals.

Results from the 2005/06 survey of users will be used to improve the definition and tracking of internal and external FIA-FSP performance measures.

The Process Working Group will review peer-review processes in other jurisdictions to determine how to continue to strengthen the peer-review process.

Resources will be allocated to improve the repositories for finished products, including the preparation of portable document format (PDF) files of earlier research funded through the Forest Innovation Investment.

## **Collaboration**

In 2006/07 the Board will continue to seek out, support, and participate in partnerships that increase the effectiveness of FIA-FSP funding.

---

## **2.2 Research**

### **New Projects**

The Sustainability and Timber Growth and Value PAC strategies and priorities shape the annual FIA-FSP Research Call for Proposals. The largest proportion of available funds within each program is allocated to these priorities, and is available for single- and multi-year projects, as well as for long-term experiments. A smaller portion of funds is available for proposals that fall within the general research program, but on topics not identified as the annual priority.

From analysis of current commitments to multi-year projects started in 2004/05 and 2005/06, the Board decided to focus new research projects in 2006/07 on the topics set out in Tables 4 and 5. These tables identify the recommended allocation of funding to specific themes and topics for the Sustainability and Timber Growth and Value programs; the numbers relate to the organization of topics and in no way indicate priority. The research topics and priorities are described more fully in

the PAC strategies and the two documents on eligible research topics for 2006/07<sup>1</sup>.

Fifty-two new projects, valued at \$2,263,298, are recommended for funding under the Sustainability Program, and 28 projects valued at \$1,232,771 are recommended for funding under the Timber Growth and Value Program. The larger proportion of funding allocated to the Sustainability Program is a result of the breadth of topics in that area that were eligible in 2006/07.

In 2006/07, the Board also accepted responsibility for guiding expenditure of federal MPB research funding. At the Board's request, the chairs of the Timber and Sustainability PACs compared the highest priorities of the MoFR's MPB Stewardship Research Strategy with the research priorities previously identified and recommended by the PACs.

With small adjustments, MPB research priorities were thus identified for inclusion in the 2006/07 Call for Proposals.<sup>2</sup> Table 6 shows the recommended allocation of \$1,558,668 funding to MPB-related research in 2006/07.

In 2006/07, the Board also recommended \$68,040 for three projects that fall within the research program, but not within priority topics. Two projects come under the Sustainability Program theme of ecosystem structure and processes, and biodiversity related to forest management; and one under the Timber Growth and Value Program theme of climate change.

---

<sup>1</sup> *FLA-FSP Sustainability Program Recommended Research Topics 2006/07, September 2005; FLA-FSP Timber Growth and Value Program Recommended Research Topics 2006/07, September 2005.*

---

<sup>2</sup> *FLA-FSP Mountain Pine Beetle Eligible Research Topics 2006/07, September 2005.*

**Table 4 Recommended Sustainability Program allocations by theme (bold) and topic**

	1-Year Projects		2-Year Projects		3-Year Projects	
	No.	2006/07 (\$)	No.	2006/07 (\$)	No.	2006/07 (\$)
<b>Sustainability Program Allocation</b>	<b>18</b>	<b>683,689</b>	<b>14</b>	<b>574,441</b>	<b>20</b>	<b>1,005,168</b>
<b>1 Ecosystem structure, function, and processes, and biodiversity related to forest management</b>	<b>4</b>	<b>153,342</b>	<b>4</b>	<b>176,017</b>	<b>10</b>	<b>419,701</b>
1.1 Riparian ecology and management of small streams	1	45,192	3	134,017	0	0
1.3 Coarse filter approaches to maintaining biodiversity at the landscape scale	0	0	0	0	1	41,475
1.4 Effectiveness of stand-level structures and habitat in maintaining biodiversity	3	108,150	1	42,000	9	378,226
<b>2 Decision support tools for sustainable forest management</b>	<b>2</b>	<b>102,057</b>	<b>2</b>	<b>77,779</b>	<b>0</b>	<b>0</b>
2.1 Habitat supply modeling	2	102,057	2	77,779	0	0
<b>3 Sustainable forest management indicators, targets, and monitoring systems</b>	<b>11</b>	<b>406,765</b>	<b>5</b>	<b>242,945</b>	<b>9</b>	<b>502,027</b>
3.1 Indicators and monitoring systems	8	293,837	3	165,328	7	365,448
3.2 Indicator targets and functional thresholds of sustainability	1	63,000	2	77,617	0	0
3.3 Indicators for economic and social sustainability	2	49,928	0	0	2	136,579
<b>4 Scientific information to inform policy, regulations, and FRPA practice requirements</b>	<b>1</b>	<b>21,525</b>	<b>3</b>	<b>77,700</b>	<b>1</b>	<b>83,440</b>
4.1 Species at Risk - recovery research	1	21,525	3	77,700	1	83,440

Note: Totals may not sum due to rounding.

**Table 5 Recommended Timber Growth and Value Program allocations by theme (bold) and topic**

	1-Year Projects		2-Year Projects		3-Year Projects	
	No.	2006/07 (\$)	No.	2006/07 (\$)	No.	2006/07 (\$)
<b>Timber Growth and Value Program Allocation</b>	<b>11</b>	<b>443,363</b>	<b>8</b>	<b>383,012</b>	<b>9</b>	<b>406,396</b>
<b>1 Basic research on tree growth and stand development</b>	<b>3</b>	<b>53,130</b>	<b>3</b>	<b>147,263</b>	<b>2</b>	<b>101,432</b>
1.1 Complex stands	2	43,155	3	147,263	1	47,305
1.3 Old stands	1	9,975	0	0	1	54,127
<b>2 Design and analysis of silvicultural systems</b>	<b>2</b>	<b>102,770</b>	<b>3</b>	<b>142,220</b>	<b>1</b>	<b>52,500</b>
2.1 Complex stands	2	102,770	3	142,220	1	52,500
<b>3 Growth and yield modeling/predictions</b>	<b>0</b>	<b>0</b>	<b>0</b>	<b>0</b>	<b>1</b>	<b>71,400</b>
<b>4 Timber losses to environmental factors (wind, drought, insects, disease)</b>	<b>3</b>	<b>188,763</b>	<b>0</b>	<b>0</b>	<b>2</b>	<b>54,908</b>
4.1 Stand and forest dynamics following disturbance	1	32,163	0	0	1	29,996
4.2 Estimating losses	1	79,800	0	0	1	24,911
4.3 Mitigating losses	1	76,800	0	0	0	0
<b>6 Marketable resources other than timber</b>	<b>2</b>	<b>82,950</b>	<b>1</b>	<b>68,250</b>	<b>2</b>	<b>81,165</b>
6.1 Identify critical knowledge gaps	2	82,950	0	0	1	27,720
6.2 Impacts of disturbance on non-timber forest products	0	0	1	68,250	1	53,445
<b>7 Climate change – forest health impacts</b>	<b>1</b>	<b>15,750</b>	<b>1</b>	<b>25,279</b>	<b>1</b>	<b>44,992</b>

Note: Totals may not sum due to rounding.

**Table 6 Recommended allocations to research related to mountain pine beetle, by Sustainability and Timber Growth and Value program theme (bold) and topic**

		1-Year Projects		2-Year Projects	
		No.	2006/07 (\$)	No.	2006/07 (\$)
<b>Mountain Pine Beetle Sustainability Allocation</b>		<b>1</b>	<b>51,660</b>	<b>6</b>	<b>391,039</b>
<b>1</b>	<b>Ecosystem structure, function and processes, and biodiversity related to forest management</b>	<b>1</b>	<b>51,660</b>	<b>4</b>	<b>237,844</b>
1.3	Coarse filter approaches to maintaining biodiversity at the landscape scale	0	0	2	142,569
1.4	Effectiveness of stand-level structures and habitat in maintaining biodiversity	0	0	1	38,850
1.6	Watershed function	1	51,660	1	56,425
<b>2 Decision support tools for sustainable forest management</b>		<b>0</b>	<b>0</b>	<b>1</b>	<b>84,945</b>
2.6	Ecological Risk Assessment Frameworks	0	0	1	84,945
<b>4 Scientific information to inform policy, regulations, and FRPA practice requirements</b>		<b>0</b>	<b>0</b>	<b>1</b>	<b>68,250</b>
4.1	Species at Risk - recovery research	0	0	1	68,250
<b>Mountain Pine Beetle Timber Growth and Value and Harvesting Allocation</b>		<b>2</b>	<b>112,560</b>	<b>17</b>	<b>1,003,409</b>
<b>4 Timber losses to mountain pine beetle</b>		<b>0</b>	<b>0</b>	<b>13</b>	<b>714,443</b>
4.1	Coarse filter approaches to maintaining biodiversity at the landscape scale	0	0	9	535,091
4.3	Effectiveness of stand-level structures and habitat in maintaining biodiversity	0	0	4	179,352
<b>5 Analytical techniques and models for strategic analysis</b>		<b>2</b>	<b>112,560</b>	<b>1</b>	<b>75,910</b>
5.3	Techniques for scheduling harvesting after MPB attack	2	112,560	1	75,910
<b>FH&amp;E Forest harvesting and engineering studies on salvaging MPB-killed timber</b>		<b>0</b>	<b>0</b>	<b>3</b>	<b>213,056</b>
<b>Total</b>		<b>3</b>	<b>164,220</b>	<b>23</b>	<b>1,394,448</b>

Note: Totals may not sum due to rounding.

## Continuing Projects

Table 7 sets out the Board’s recommendation for continued funding of multi-year projects initiated in 2005/06 under themes identified by

the Sustainability and Timber PACs, based on progress to date.

**Table 7 Recommended continuing projects (approved in 2005/06), based on progress to date**

Program/Topic	3-Year Projects		2-Year Projects		Subtotal (\$)
	No.	2006/07 (\$)	No.	2006/07 (\$)	
<b>Sustainability</b>	<b>6</b>	<b>257,609</b>	<b>5</b>	<b>167,370</b>	<b>424,979</b>
<b>1 Ecosystem structure, function, and processes, and biodiversity related to forest management</b>					
1.3 Coarse filter approaches to maintaining biodiversity at the landscape scale	1	58,800	1	15,750	74,550
1.4 Effectiveness of stand-level structures and habitat in maintaining biodiversity	2	88,074	1	31,920	119,994
<b>3 Sustainable forest management indicators, targets, and monitoring systems</b>					
3.1 Indicators and monitoring systems	2	55,860	1	47,250	103,110
<b>4 Scientific information to inform policy, regulations, and FRPA practice requirements</b>					
4.1 Species at Risk - recovery research	1	54,875	2	72,450	127,325
<b>Timber</b>	<b>5</b>	<b>282,937</b>	<b>7</b>	<b>330,409</b>	<b>613,346</b>
<b>1 Basic research on tree growth and stand development</b>					
1.1 Complex stands	1	26,408	3	131,887	158,295
<b>2 Design and analysis of silvicultural systems</b>					
2.1 Complex stands	1	34,650	1	11,445	46,095
<b>3 Growth and yield modeling/predictions</b>					
3.1 Complex stands	2	190,694	0	0	190,694
<b>4 Timber losses to environmental factors (wind, drought, insects, and disease)</b>					
4.1 Stand and forest dynamics following MPB	1	31,185	2	133,117	164,302
4.2 Estimating losses	0	0	1	53,960	53,960
<b>Total</b>	<b>11</b>	<b>540,546</b>	<b>12</b>	<b>497,779</b>	<b>1,038,325</b>

Note: Totals may not sum due to rounding.

Table 8 sets out the Board's recommendation for continued funding of 3-year projects initiated in 2004/05 under the interim research

themes, based on a review of progress to date. These projects are expected to complete in 2006/07.

**Table 8 Recommended continuing projects (approved in 2004/05) by interim research theme**

Program/Topic	3-Year Projects	
	No.	2006/07 (\$)
<b>Sustainability</b>	<b>32</b>	<b>2,757,155</b>
1-1 Foundations for biodiversity	1	51,055
1-2 Sustainability indicators	3	336,793
1-3 Targets for biodiversity	1	34,858
2-1 Maintenance of ecosystem characteristics	2	55,965
2-2 Ecosystem responses to forest practices	8	641,991
2-3 Effects of climate change	1	42,000
3-1 <i>Species at Risk Act</i>	3	294,755
3-2 <i>Forest and Range Practices Act</i>	3	337,850
4-2 Effects of forest practices on watersheds and water	7	658,544
4-3 Analytical and decision-making models	2	182,805
4-6 Habitat supply models	1	120,539
<b>Timber</b>	<b>28</b>	<b>1,705,297</b>
5-1 Managing complex forests	1	59,850
5-2 Silvicultural systems and treatments for productivity of complex stands	6	326,427
5-3 Site prescriptions for full growth potential	4	196,225
5-4 Silviculture systems and treatments for forest health and wildfire	4	109,871
5-5 Better seed sources/species selection	1	10,000
6-1 More efficient prescriptions for integrated resource management		0
6-2 Maintain or enhance economic viability	2	177,687
6-3 Predicting production effects	1	45,045
6-4 Optimize timber qualities	1	35,000
7-1 Timber supply models and AAC determination	0	0
7-2 Effects of management practices	6	618,697
7-3 Continued development of SIBEC and other tools	1	96,495
7-5 Use of various molecular technologies	1	30,000
<b>Total</b>	<b>60</b>	<b>4,462,452</b>

Note: Totals may not sum due to rounding.

The Board’s goal, over time, is to maintain approximately equal funding of the Sustainability and Timber Growth and Value programs, while seeking a balance in funding projects of one to three years. This transition may take several years, as the multi-year projects approved in 2004/05 and 2005/06 are replaced by single-year and new multi-year projects. It is also affected by the response of research proponents to annual priorities set out in the Call for Proposals.

Table 9 identifies the number and value of research projects funded in 2006/07, by duration and program.

The Sustainability Program represents 60% of the 2006/07 research budget, the Timber

Growth and Value Program 39%, and proponent-driven projects 1%. The number and value of sustainability research proposals far exceeded those for timber growth and value, and this affects the balance that was originally envisioned by the Board. The Board views this situation as resulting from the focus by research and user communities on priority management issues. In 2006/07 the Board will revisit its desire to balance funding between Sustainability and Timber Growth and Value research priorities.

Table 10 identifies the number and value of mountain pine beetle research projects recommended for funding in 2006/07, by duration and program.

**Table 9 Number and value of research projects funded in 2006/07, by duration and program**

Project Duration	Sustainability Program		Timber Program		Proponent Driven		Subtotal	
	No.	2006/07 (\$)	No.	2006/07 (\$)	No.	2006/07 (\$)	No.	2006/07 (\$)
3 years	58	4,019,932	42	2,394,628	1	30,975	<b>101</b>	6,445,535
2 years	19	741,811	15	713,421	3	51,765	<b>37</b>	1,506,997
1 year	18	683,689	11	443,363	0	0	<b>29</b>	1,127,052
<b>Total</b>	<b>95</b>	<b>5,445,432</b>	<b>68</b>	<b>3,551,412</b>	<b>4</b>	<b>82,740</b>	<b>167</b>	<b>9,079,584</b>

Note: Totals may not sum due to rounding.

**Table 10 Number and value of mountain pine beetle research projects funded in 2006/07, by duration and program**

Project Duration	MPB Sustainability		MPB Timber		Subtotal	
	No.	2006/07 (\$)	No.	2006/07 (\$)	No.	2006/07 (\$)
3 years	0	0	0	0	0	0
2 years	6	391,039	17	1,003,409	23	1,394,448
1 year	1	51,660	2	112,560	3	164,220
<b>Total</b>	<b>7</b>	<b>442,699</b>	<b>19</b>	<b>1,115,969</b>	<b>26</b>	<b>1,558,668</b>

Note: Totals may not sum due to rounding.

## Long-term Research Installation Maintenance

Long-term Research Installations (LTRIs) provide opportunities for the collection of long-term data and collaborative research relevant to priorities for the Sustainability and Timber Growth and Value programs.

The 2006/07 FIA-FSP provides \$893,337 to support site maintenance, core monitoring, and knowledge asset protection on 32 LTRIs. For 2006/07 only, this includes re-measurements on installations where such information is critical to their continued use. Table 11 identifies the number and value of LTRI projects recommended for funding in 2006/07, by duration.

**Table 11** Number and value of LTRI projects funded in 2006/07, by duration

Project Duration	No.	2006/07 (\$)
3 years	21	620,836
2 years	2	49,088
1 year	9	223,413
<b>Total</b>	<b>32</b>	<b>893,337</b>

Note: Totals may not sum due to rounding.

## Partnerships with other Research Initiatives

The Ministry of Forests and Range, through the FIA-FSP, contributes to the Sustainable Forest Management Network (SFMN). The SFMN is a national partnership to deliver an internationally recognized, interdisciplinary program that undertakes relevant university-based research and training. British Columbia has contributed to the SFMN since 2003.

Additional funding in 2006/07 enables the FIA-FSP to increase its support for the SFMN to \$510,000 and in so doing, leverage funding from the network to address research in B.C.

## 2.3 Extension

Extension represents the full suite of communication, technology transfer, and informal education processes that form the crucial link between research and the policies and practices supporting science-based SFM in B.C. The FIA-FSP supports extension in two important, complementary ways: 1) through proponent-delivered extension components of individual research projects and extension projects, and 2) ongoing support of the Provincial Forest Extension Program (PFEP) coordinated and delivered by the provincial forest extension provider, FORREX.

For 2006/07, PFEP investments build on past extension program activities and are guided by the *British Columbia Provincial Forest Extension Strategy 2005–2010*.<sup>3</sup> A budget of \$2,367,675 is allocated to six extension objectives (themes) across seven subject-area clusters (topics) as summarized in Table 12. The FIA-FSP contributes \$1,980,225 and the Mountain Pine Beetle Emergency Response: Canada–B.C. Implementation Strategy contributes an additional \$387,450 to improve access to MPB research and related sustainable forest management decisions.

As noted in Table 12, FORREX will deliver \$2,147,675 in services (\$1,760,225 from FIA-FSP funds and \$387,450 from MPB funds) and the MoFR will deliver \$220,000 of services (FIA-FSP funds) related to the Provincial Forest Extension Program in 2006/07.

<sup>3</sup> *British Columbia Provincial Forest Extension Program Strategic Plan 2005–2010, May 2006.*

**Table 12 Provincial Forest Extension Program budget summary 2006/07, by subject area cluster (row) and extension objective (column)**

Extension Program Cluster	Improving Access	Increasing Trust	Improving Knowledge / Skills	Improving Decisions	Reduced Risk / Uncertainty	Knowledge-based Sector	Subtotal (\$)
Watershed Management	69,535	18,906	65,790	14,949	0	0	169,180
Forest Resource Dynamics	98,553	0	53,819	143,400	0	62,226	357,998
Ecosystem Management and Conservation Biology	41,397	0	149,239	42,583	0	10,870	244,088
Socio-economics	14,034	103,304	39,580	10,687	59,204	0	226,809
Aboriginal Forestry	0	0	50,225	78,553	0	0	128,778
Information Products and Services	231,551	99,488	0	0	0	0	331,038
Strategic Initiatives	0	0	50,572	0	144,477	107,285	302,334
<b>FIA-FSP Funding (FORREX)</b>	<b>455,070</b>	<b>221,698</b>	<b>409,224</b>	<b>290,171</b>	<b>203,681</b>	<b>180,381</b>	<b>1,760,225</b>
FIA-FSP Funding (MoFR)	140,000	0	80,000	0	0	0	220,000
MPB Extension (FORREX)	210,171	0	99,459	77,820	0	0	387,450
<b>Total (\$)</b>	<b>805,242</b>	<b>221,698</b>	<b>588,683</b>	<b>367,990</b>	<b>203,681</b>	<b>180,381</b>	<b>2,367,675</b>

Note: Totals may not sum due to rounding.

## 2.4 Forest Science Board

### Board and PAC Support

Support to the Board and PACs will increase significantly in 2006/07 to effectively allocate the additional \$5.67 million in funding (see Section 2.3) and incorporate First Nations interests into the FIA-FSP strategic and annual planning processes.

The increased support covers additional Board meetings (4) and conference calls (4), the addition of two First Nations representatives to the Board, and the establishment of a transitional First Nations Advisory Committee to provide advice to the three PACs in 2006/07.

Secretariat support to the PACs will also increase in 2006/07 to relieve the volunteer PAC chairs. Additional activities will bolster the

annual process of establishing research priorities by designing and/or implementing syntheses and problem analyses, and seek to improve liaison between the PACs and Board on additional issues where PAC advice is requested.

### Program Development

Substantial effort will be invested in program development in 2006/07. Contracts will be commissioned to review the alignment of Letters of Intent with PAC priorities, to develop a hierarchy of user-defined management questions, and to identify emerging issues and related research needs.

Each research PAC will commission syntheses and gap analyses on two of its priority topics to help establish research priorities for the 2008/09 Call for Proposals. These analyses will

evaluate the extent to which research is addressing PAC priorities and key user-defined management questions.

Projects will also be undertaken to evaluate the effectiveness of the Provincial Forest Extension Program and the research peer-review process.

---

## **2.5 Administration**

### **Program Administration**

PricewaterhouseCoopers (PwC) will continue to administer FSP-approved new and continuing (multi-year) projects and the Provincial Forest Extension Provider contract in 2006/07, and the 2007/08 Call for Proposals.

Ministry of Forests and Range staff will manage the PwC contract and other contracts needed by the Forest Science Board and PACs.

### **Audits**

The Board and the Process Working Group will implement the action plan associated with the Ministry of Forests and Range's internal audit of the FIA-FSP.

The PwC audit plan for 2006/07 will see the completion of both financial and performance audits for 2005/06 projects and the auditing of ongoing projects in 2006/07.

PwC uses a continuous risk management assessment process that allows risk to be assessed at both the recipient and project levels to determine the frequency and level of detail needed for project monitoring. Financial audits include a review of policies, procedures, and controls surrounding the FSP that are established at the recipient level and a review of project cost statements to ensure consistency with and applicability to the individually approved project. Performance audits use objective measures to ensure that projects have achieved the agreed-upon milestones and outcomes.

### 3 FIA-FSP Budget 2006/07

In February 2006, the Forest Investment Council increased FIA-FSP funding from \$10.482 million to \$14.182 million. An additional \$1.97 million was provided by the

Mountain Pine Beetle Emergency Response: Canada-B.C. Implementation Strategy. Table 13 presents the Board's recommended allocation of these funds.

**Table 13 FIA-FSP budget allocation 2006/07**

Activity	Budget (\$)	Budget (\$)	Budget (%)
<b>Forest Science Board</b>		<b>798,170</b>	<b>4.9</b>
Board and PAC support	363,170		2.2
Program development	435,000		2.7
<b>Research</b>		<b>12,041,589</b>	<b>74.6</b>
<b>Sustainability Program</b>	<b>5,445,432</b>		33.7
Continuing multi-year projects (initiated 04/05)	2,757,155		
Continuing multi-year projects (initiated 05/06)	424,979		
New multi-year projects (06/07)	1,579,609		
Single-year projects (06/07)	683,689		
<b>Timber Growth and Value Program</b>	<b>3,551,412</b>		22.0
Continuing multi-year projects (initiated 04/05)	1,705,296		
Continuing multi-year projects (initiated 05/06)	613,345		
New multi-year projects (06/07)	789,408		
Single-year projects (06/07)	443,363		
<b>Mountain Pine Beetle Research</b>	<b>1,558,668</b>		9.7
New two-year projects (06/07)	1,394,448		
Single-year projects (06/07)	164,220		
<b>New Proponent-driven Proposals</b>	<b>82,740</b>		0.5
Continuing multi-year projects (initiated 05/06)	14,700		
New multi-year projects (06/07)	68,040		
<b>Long-term Research Installation Maintenance</b>	<b>893,337</b>		5.5
New multi-year projects (06/07)	669,924		
Single-year projects (06/07)	223,413		
<b>Research Partnerships</b>	<b>510,000</b>		3.2
<b>Extension</b>		<b>2,367,675</b>	<b>14.7</b>
Provincial Forest Extension Plan (FORREX and MoFR)	1,980,225		
MPB Extension	387,450		
<b>Communications</b>		<b>65,000</b>	<b>0.4</b>
<b>Administration</b>		<b>823,000</b>	<b>5.1</b>
Program Administration	608,000		
Audits	215,000		
<b>Contingency</b>		<b>56,566</b>	<b>0.4</b>
<b>Total 2006/07</b>		<b>16,152,000</b>	<b>100.0</b>

## Appendix: Recommended Projects 2006/07

**Table A-1 Recommended allocation of FIA-FSP research funding 2006/07**

Category	Budget (\$)
<b>New Single-Year Projects</b>	<b>1,514,685</b>
Sustainability Program	683,689
Timber Growth and Value Program	443,363
Proponent-driven Projects	0
Mountain Pine Beetle Projects	164,220
Long-term Research Installations	223,413
<b>New Multi-Year Projects</b>	<b>4,501,429</b>
Sustainability Program	1,579,609
Timber Growth and Value Program	789,408
Proponent-driven Projects	68,040
Mountain Pine Beetle Projects	1,394,448
Long-term Research Installations	669,924
<b>Continuing Multi-Year Projects</b>	<b>5,515,475</b>
Sustainability Program	3,182,134
Timber Growth and Value Program	2,318,641
Proponent-driven Projects	14,700
<b>Total</b>	<b>11,531,589</b>

Note: Totals may not sum due to rounding.

The following pages list recommended projects for 2006/07 in each of the program categories. Note that totals may not sum due to rounding.

### List of Acronyms

FERIC	Forest Engineering Research Institute of Canada
MoE	Ministry of Environment
MoFR	Ministry of Forests and Range
NRCan	Natural Resources Canada
SFU	Simon Fraser University
TRU	Thompson Rivers University
UBC	University of British Columbia
UNBC	University of Northern British Columbia
UVic	University of Victoria

**Sustainability Program Recommendations—Single-Year Projects TOTAL: \$683,689**

Topic	Project	Project Title	Proponent	Organization	2006/07 (\$)
S 1.1	Y07-1039	A broad-scale investigation of the effects of streamside clear-cut timber harvesting on small stream ecosystems in British Columbia: analyses of large-scale databases to forecast impacts on physical and thermal habitats and their salmonid populations	Scott G. Hinch	UBC	45,192
S 1.1	Y07-1158	Structural recruitment: factors affecting survival and growth of residual immature trees after clearcut overstory harvesting	Ruth Lloyd	Bulkley Valley Research Centre	28,350
S 1.1	Y07-1302	Dry forests and grasslands: stand structures, habitat, and small mammals as indicators of biodiversity	Thomas P. Sullivan	UBC	44,100
S 1.1	Y07-1312	The suitability of stand-level retention to mountain caribou foraging and movement requirements	Robert Serrouya	Simpco Development Corporation	35,700
S 2.1	Y07-1057	Developing a science-based framework to identify and designate "temperature sensitive streams" for sustainable riparian forest management in the B.C. Interior	Marc Nelitz	Essa Technologies	62,119
S 2.1	Y07-1064	Extension of habitat supply tools: the caribou habitat assessment and supply estimator	Scott McNay	McGregor Model Forest Association	39,938
S 3.1	Y07-1006	Developing a cumulative effects model of forest aesthetics at the landscape level: automating the spatial design and planning of variable retention	Michael Meitner	UBC	36,750
S 3.1	Y07-1033	Direct and indirect effects of harvesting on carabid beetle community composition in regenerating sub-boreal spruce stands – refining their indicator potential through understanding of biotic interactions	Staffan Lindgren	UNBC	45,150
S 3.1	Y07-1047	Impact of cattle foraging on understory plant biodiversity (range health) using long-term exclosures	Thomas P. Sullivan	UBC	37,800
S 3.1	Y07-1072	Optimal sampling strategy for effective evaluation of the soils value at the cutblock level under FRPA	Robert Magai	Selkirk Geospatial Research Centre	27,990
S 3.1	Y07-1075	Stand-level vegetation indicators for boreal mixedwood forests	Sybille Haeussler	Bulkley Valley Research Centre	14,314
S 3.1	Y07-1154	Linking range health assessment methodology with science	Reg Newman	MoFR	49,753
S 3.1	Y07-1160	The implications of management practices for mitigating mountain pine beetle on soil-based indicators of SFM	Steven Day	Canfor	53,550
S 3.1	Y07-1166	Application of remote sensing to detect changes in vegetation structure from differing land treatment levels in the Kootenay region of British Columbia	Robert Magai	Selkirk Geospatial Research Centre	28,530
S 3.2	Y07-1269	Range of natural variation in structural attributes of young stands: refining current indicators	Ruth Lloyd	Bulkley Valley Research Centre	63,000
S 3.3	Y07-1036	A synthesis of BC public perception survey results and techniques for quantifying social indicators in forest planning	Stephen R.J. Sheppard	UBC	33,075
S 3.3	Y07-1311	Open access, common pool resources and non-timber values: a model for government intervention	Sumeet Gulati	UBC	16,853
S 4.1	Y07-1051	Integration and extension of Marbled Murrelet habitat data collected at different scales	D.B. Lank	SFU	21,525

## Sustainability Program Recommendations—Multi-year Projects **TOTAL: \$1,579,609**

Topic	Project	Project Title	Proponent	Organization	2006/07 (\$)	2007/08 (\$)	2008/09 (\$)	Total (\$)
S 1.1	Y07-1031	Hydrogeomorphic response to forest disturbance: Fishtrap Creek	Brett Eaton	UBC	40,740	34,965	0	75,705
S 1.1	Y07-1276	Effect of stand structure and riparian buffer design on wind damage susceptibility and large woody debris recruitment	Steve Mitchell	UBC	67,562	67,562	0	135,124
S 1.1	Y07-1305	Quickbird high resolution satellite imagery for riparian TEM classification	Sarah Gergel	UBC	25,715	41,517	0	67,232
S 1.3	Y07-1014	Evaluating effectiveness of forest management practices at sustaining biological diversity in northeastern British Columbia	Fred Bunnell	UBC	41,475	41,790	42,105	125,370
S 1.4	Y07-1052	Does retention of downed wood help maintain stand-level functional biodiversity of mycorrhizal fungi in EESF clearcuts?	Melanie Jones	UBC	26,775	37,275	6,300	70,350
S 1.4	Y07-1167	Coarse woody debris in the East Kootenays: understanding sources and dynamics to guide targets for sustainable forest management	Lori Daniels	UBC	64,638	58,422	38,808	161,868
S 1.4	Y07-1256	Retention patches: windthrow and recruitment of habitat structure	J. Douglas Steventon	MoFR	42,000	42,000	0	84,000
S 1.4	Y07-1268	Fisher habitat ecology in the Peace River Region	Eric Lofroth	MoE	38,850	38,850	28,875	106,575
S 1.4	Y07-1300	Downed wood in riparian areas and its contribution to stand-level biodiversity	John S. Richardson	UBC	32,252	36,778	36,895	105,925
S 1.4	Y07-1301	Long-term trends in amphibians in riparian reserves: are riparian reserves effective for their conservation?	John S. Richardson	UBC	22,281	23,828	24,790	70,899
S 1.4	Y07-1314	Determining stand level structures in dry Douglas-fir forests that maintain appropriate levels of ectomycorrhizal genetic diversity to facilitate Douglas-fir regeneration	Suzanne Simard	UBC	46,777	57,540	57,540	161,857
S 1.4	Y07-1322	Can the important microbial diversity and nutrient cycling characteristics of old growth Douglas-fir forests be maintained in managed second growth forests?	Richard S. Winder	NRCAN	76,650	79,800	81,900	238,350
S 1.4	Y07-1324	Abundance of critical wildlife habitat attributes in relation to forest management practices	Walt Klenner	MoFR	26,250	42,000	68,250	136,500
S 1.4	Y07-1329	Measuring success in managing for Saskatoon berries and other traditionally important plants.	Chief Fred Sampson	Siska Traditions Society	43,754	25,000	25,000	93,754
S 2.1	Y07-1027	Incorporation of wildlife habitat capability into the multi-value, spatially-explicit, complex cutblock ecosystem management model LLEMS	J.P. (Hamish) Kimmins	UBC	67,279	66,203	0	133,482
S 2.1	Y07-1028	Landscape analysis of habitat supply and effects on populations of the Northern Spotted Owl in BC: extension of results	F. Louise Waterhouse	MoFR	10,500	4,200	0	14,700

Topic	Project	Project Title	Proponent	Organization	2006/07 (\$)	2007/08 (\$)	2008/09 (\$)	Total (\$)
S 3.1	Y07-1005	Using stereoscopic high resolution satellite imagery to assess landscape and stand level characteristics	Karl Kliparchuk	McElhanney Consulting Services Ltd.	39,375	30,660	28,560	98,595
S 3.1	Y07-1010	Developing indicators of soil productivity, function and biodiversity through soil biotic communities	Marty Kranabetter	Bulkley Valley Research Centre	36,225	26,775	26,775	89,775
S 3.1	Y07-1020	Indicators of biodiversity within aspen stands of the Interior Douglas-fir zone	Karl Larsen	TRU	43,890	16,800	0	60,690
S 3.1	Y07-1024	Sustainable forestry indicators derived from airborne LIDAR data and high spatial resolution satellite imagery	Nicholas Coops	UBC	68,938	35,338	0	104,276
S 3.1	Y07-1040	Alternative indicators of the integrity of stream function as an assessment of sustainable forest management	John S. Richardson	UBC	74,283	74,283	58,752	207,318
S 3.1	Y07-1062	Integration of airborne LiDAR and hyperspectral remote sensing data to support the Vegetation Resources Inventory and sustainable forest management	K. Olaf Niemann	UVic	70,875	70,875	68,250	210,000
S 3.1	Y07-1074	Hydrologic indicators for watershed sensitivity to peak flow changes in small upland watersheds	Marwan Hassan	UBC	45,990	47,565	23,415	116,970
S 3.1	Y07-1172	Development of a microbial indicator database for validating measures of sustainable forest soils	Richard S. Winder	NRCan	52,500	36,750	0	89,250
S 3.1	Y07-1282	Using GIS and remote sensing to assess aquatic habitat indicators at both stream reach and watershed scales	Adam Wei	UBC Okanagan	58,485	52,185	52,185	162,855
S 3.1	Y07-1284	Hoe-forwarding effects on tree growth and site productivity	Mary-Jane Douglas	Foresol Consulting Ltd.	40,215	20,685	17,640	78,540
S 3.2	Y07-1015	Developing thresholds for within-stand biodiversity indicators	Fred Bunnell	UBC	41,990	41,990	0	83,980
S 3.2	Y07-1069	Effective landscape-level planning approaches to sustain biodiversity in the managed forests of southeastern B.C.	Ralph W. Wells	UBC	35,627	33,842	0	69,469
S 3.3	Y07-1002	Common knowledge, values and perceptions of sustainable forest management held by First Nations communities	Ronald Trospen	UBC	97,650	115,679	103,656	316,985
S 3.3	Y07-1307	Improvement of social, economic and other indicators of sustainable forest management and tools for their integration	John Innes	UBC	38,929	29,295	29,295	97,519
S 4.1	Y07-1019	Identification of critical habitat requirements for Interior Western Screech-owls	Richard D. Weir	Artemis Wildlife Consultants	18,900	24,570	0	43,470
S 4.1	Y07-1026	Evaluating the potential threat of Barred Owls on Northern Spotted Owl population recovery and habitat management strategies	F.L. Waterhouse	MoFR	16,800	3,150	0	19,950
S 4.1	Y07-1065	Use of adaptive management to mitigate risk of predation for woodland caribou in north central British Columbia	R. Scott McNay	McGregor Model Forest Association	83,440	84,000	84,000	251,440

Topic	Project	Project Title	Proponent	Organization	2006/07 (\$)	2007/08 (\$)	2008/09 (\$)	Total (\$)
S 4.1	Y07-1273	Developing stand management prescriptions to maintain suitable habitat for mountain caribou	Walt Klenner	MoFR	42,000	31,500	0	73,500

**Sustainability Program Recommendations—Continuing Projects (approved in 2005/06) TOTAL: \$424,979**

Topic	Project	Project Title	Proponent	Organization	2005/06 (\$)	2006/07 (\$)	2007/08 (\$)	Total (\$)
1.3	Y07-2044	Ecologically-based connectivity indices for landscape monitoring	David Huggard	Consultant	17,850	15,750	0	33,600
1.3	Y07-2062	Coarse filter approaches for the conservation biology of canopy lichens in wet cedar-hemlock and sub-boreal spruce forests of central-interior BC	Darwyn Coxson	UNBC	49,875	58,800	24,518	133,193
1.4	Y07-2027	Amphibians as indicators of wetland habitat conservation under variable retention harvesting practices	Bill Beese	Western Forest Products	0	31,920	0	31,920
1.4	Y07-2008	Stand structure and maintenance of biodiversity in green-tree retention stands at 30 years after harvest: a vision into the future	Thomas Sullivan	UBC	54,600	54,600	57,750	166,950
1.4	Y07-2183	Assessment of the effectiveness of green tree retention in maintaining the diversity of and promoting the recolonization by ectomycorrhizal fungal species into harvested areas of coastal forest	Tony Trofymow	NRCan	33,831	33,474	31,185	98,490
3.1	Y07-2030	Terrestrial gastropods as indicator species for monitoring biodiversity effects from variable retention harvesting practices	Bill Beese	Western Forest Products	47,250	47,250	0	94,500
3.1	Y07-2029	Utility of carabid beetles as indicator species for monitoring biodiversity effects from variable retention harvesting practices	Bill Beese	Western Forest Products	48,300	48,300	46,725	143,325
3.1	Y07-2093	Recovery of soil carbon and nitrogen ten years after harvesting and site preparation at Sicamous Creek	Graeme Hope	MoF	40,797	7,560	10,500	58,857
4.1	Y07-2042	Evaluating and refining guidelines for forested buffers for grizzly bear habitat management	Bruce McLellan	MoF	73,500	57,750	0	131,250
4.1	Y07-2071	Forecasting forest vegetation response to management activities aimed at reducing ungulate browse in mountain caribou winter range	Alan Vyse	TRU	44,100	14,700	0	58,800
4.1	Y07-2136	Establishing a science basis for recovery of woodland caribou in north-central British Columbia	Scott McNay	McGregor Model Forest Association	57,618	54,875	44,625	157,118

**Sustainability Program Recommendations—Continuing Projects (approved in 2004-05) TOTAL: \$2,757,155**

Topic	Project	Project Title	Proponent	Organization	2004-05 (\$)	2005/06 (\$)	2006/07 (\$)	Total (\$)
1-1: Foundations for biodiversity	Y07-3001	Beetle families of British Columbia	Geoffrey Scudder	UBC	51,055	51,055	51,055	153,165
1-2: Sustainability indicators	Y07-3049	Green tree retention: a tool to maintain ecosystem health and function	Sue Grayston	UBC	138,726	190,000	189,793	518,519
1-2	Y07-3128	Benthic macroinvertebrate sustainability indicator development for SFMP and LRMP applications	Ian Sharpe	MoE	73,500	74,970	74,970	223,440
1-2	Y07-3151	Does logging-elevated ultraviolet radiation exposure of streams impact juvenile coho?	Max L. Bothwell	NRCan	68,460	75,495	72,030	215,985
1-3: Targets for biodiversity	Y07-3113	Development of indicators of stream condition, function, and capacity for juvenile salmon	Jordan Rosenfeld	MoE	7,980	34,858	34,858	77,696
2-1: Maintenance of ecosystem characteristics	Y07-3064	Ectomycorrhizae and networks: their role in facilitating Douglas-fir regeneration under water, site and climatic stresses	Suzanne Simard	UBC	68,176	80,000	30,975	179,151
2-1	Y07-3220	Harvesting and site preparation treatments to develop and maintain open canopy conditions in dry-belt Douglas-fir forests: the Isobel Project	Walt Klenner	MoFR	112,723	105,000	24,990	242,713
2-2: Ecosystem responses to forest practices	Y07-3062	Cumulative watershed effects of forestry practices on stream ecosystems	Yixin Zhang	UBC	85,388	80,000	79,979	245,367
2-2	Y07-3069	Understory succession following ecosystem restoration of ingrown dry forests	Reg Newman	MoFR	16,688	10,000	14,117	40,805
2-2	Y07-3177	Dispersal and habitat selection by juvenile Northern Goshawks in a managed forest landscape	Karl Larsen	TRU	53,288	55,965	55,965	165,218
2-2	Y07-3250	Soil conditions and tree growth in BC's forests: factors affecting ecosystem response to forest practices	Chuck Bulmer	MoFR	105,000	100,000	100,000	305,000
2-2	Y07-3299	The ecology and management of dry Douglas-fir forests: the Opax Mountain Silvicultural Study	Andre Arseneault	MoFR	117,915	188,580	199,999	506,494
2-2	Y07-3342	Experiments on edge effects in Marbled Murrelets: incorporating reproductive performance into habitat quality	Ronald Ydenberg	SFU	94,110	75,000	75,000	244,110
2-2	Y07-3363	VR emulating canopy gaps in coastal forests: an operational trial and experiment	Lori D. Daniels	UBC	63,825	55,025	30,000	148,850

Topic	Project	Project Title	Proponent	Organization	2004-05 (\$)	2005/06 (\$)	2006/07 (\$)	Total (\$)
2.2	Y07-3367	Effects of logging on export of organic matter from headwater streams	Brian Heise	TRU	79,474	85,089	86,932	251,495
2-3: Effects of climate change	Y07-3026	Effects of climate change on avian communities and implications for sustainable forest management	Ann Chan-McLeod	UBC	42,404	42,000	42,000	126,404
3-1: <i>Species at Risk Act</i>	Y07-3006	Group selection systems to maintain caribou habitat in high elevation forests (ESSFwc3) in central BC	Michaela Waterhouse	MoFR	81,367	65,388	92,925	239,679
3-1	Y07-3007	Silvicultural systems to maintain northern caribou habitat in lodgepole pine forests in central BC	Michaela Waterhouse	MoFR	102,371	65,625	55,775	223,771
3-1	Y07-3086	Quantifying forest stand and landscape attributes that influence mountain caribou habitat fragmentation and predation rates	Bruce McLellan	MoFR	146,055	146,055	146,055	438,165
3-2: <i>Forest and Range Practices Act</i>	Y07-3061	Habitat use by Marbled Murrelets on southwest Vancouver Island and implications for forest management	Alan E. Burger	UVIC	79,800	79,800	79,800	239,400
3-2	Y07-3084	Long term soil productivity study	Shannon M. Berch	MoFR	180,167	72,000	87,000	339,166
3-2	Y07-3222	Carnation Creek – Forestry impacts and watershed recovery processes in a small coastal drainage	Peter J. Tschaplinski	MoFR	175,560	168,210	171,050	514,820
4-2: Effects of forest practices on watersheds and water	Y07-3017	Ecology and management of riparian - stream ecosystems: a large-scale experiment using alternative streamside management techniques	John S. Richardson	UBC	194,919	194,919	195,727	585,565
4-2	Y07-3027	The effects of riparian harvesting on fish habitat and ecology of small headwater streams	David Maloney	MoFR	145,740	145,677	145,740	437,157
4-2	Y07-3115	Snow, road, soil moisture, and harvest distribution effects on streamflow at Upper Penticton Creek	Rita Winkler	MoFR	124,230	56,246	99,855	280,331
4-2	Y07-3127	An experimental approach to evaluate impacts of the recent Okanagan Mountain Park Fire and other disturbances on large woody debris recruitment and transportation processes	Adam Wei	UBC	32,655	25,473	25,473	83,601
4-2	Y07-3273	Tsitika River sediment budget project	Rod Hudson	MoFR	119,700	96,587	120,750	337,037
4-2	Y07-3327	Evaluation of fire site rehabilitation methods in terms of controlling erosion and sedimentation	David Findlay Scott	UBC	49,980	32,550	38,000	120,530
4-2	Y07-3328	Testing the H60 concept in the Interior Watershed Assessment Procedure by process hydrology studies	David Findlay Scott	UBC	37,065	29,715	32,999	99,779

Topic	Project	Project Title	Proponent	Organization	2004-05 (\$)	2005/06 (\$)	2006/07 (\$)	Total (\$)
4-3: Analytical and decision-making models	Y07-3045	A species accounting system to integrate indicators of biological diversity	Fred L. Bunnell	UBC	70,740	70,742	85,680	227,161
4-3	Y07-3365	Development of analytic and decision models for assessing grizzly bear needs from forest management objectives	Fred Hovey	MoFR	95,871	97,125	97,125	290,121
4-6: Habitat supply models	Y07-3348	An ecosystem approach to planning for sustainable management of mountain goat resource values and timber supply	Mike Millard	McGregor Model Forest Association	80,758	120,960	120,539	322,257

### Timber Growth and Value Program Recommendations—Single-Year Projects

**TOTAL: \$443,363**

Topic	Project	Project Title	Proponent	Organization	2006/07 (\$)
T 1.1	Y07-1012	Complex stand management: extension of recent research to forest managers	Kevin Kriese	Bulkley Valley Research Centre	21,000
T 1.1	Y07-1255	Regeneration recruitment and early stand growth in partially cut and burned IDFww stands	Roderick W. Negrave	MoFR	22,155
T 1.3	Y07-1034	Growth patterns prior to mortality of mature subalpine fir in the Southern Interior	Joseph A. Antos	Consultant	9,975
T 2.1	Y07-1258	Partial cutting on steep slopes, Queen Charlotte Islands: treatment regime effects on residual stand mortality and growth; recruitment, growth and dynamics of regeneration; and non-timber understory composition	Roderick W. Negrave	MoFR	73,412
T 2.1	Y07-1169	The growth of natural regeneration under different partial cut silvicultural systems	Bruce C. Larson	UBC	29,358
T 4.1	Y07-1328	Effects of a mountain pine beetle epidemic on forest floor vegetation dynamics and regeneration in the Itcha-Ilgachuz caribou winter range in the Quesnel TSA	Deborah Cichowski	Bulkley Valley Research Centre	32,163
T 4.2	Y07-1173	Spruce beetle risk modeling in a changing climate	Stephen Taylor	NRCAN	79,800
T 4.3	Y07-1330	Evaluating the potential to store beetle-killed logs under an insulated snowpack to mitigate volume and value losses after mountain pine beetle attack	Roger Whitehead	NRCAN	76,800
T 6.1	Y07-1021	Timber/NTFP compatible management extension	Darcy Mitchell	Royal Roads University	51,450
T 6.1	Y07-1045	Incremental silviculture of lodgepole pine and non-timber forest products (NTFPs)	Thomas P. Sullivan	UBC	31,500
T 7.0	Y07-1030	Determining forest health impacts of root disease, fuels and fires for use by the CBM-CFS3 carbon accounting model	David Spittlehouse	MoFR	15,750

**Timber Growth and Value Program Recommendations—Multi-Year Projects TOTAL: \$789,408**

Topic	Project	Project Title	Proponent	Organization	2006/07 (\$)	2007/08 (\$)	2008/09 (\$)	Total (\$)
T 1.1	Y07-1018	The effects of varying levels of competing aspen on lodgepole pine growth	George Harper	MoFR	35,175	8,400	0	43,575
T 1.1	Y07-1038	Light as a factor in the growth and survival of four planted conifer species across forest gaps	Peter Fielder	MoFR	47,305	38,848	36,126	122,279
T 1.1	Y07-1267	Effects of variable retention silvicultural systems on microclimate, survival and growth of trees in west coast forests: enhanced development and validation of a forest growth model	T.A. Black	UBC	12,600	9,450	0	22,050
T 1.1	Y07-1254	Effect of site type on competitive interactions among trees in complex-structured mixed species sub-boreal forests	David Coates	Bulkley Valley Centre	99,488	86,363	0	185,851
T 1.3	Y07-1017	Rates of mortality and dead tree dynamics in old coastal forest stands	Roberta Parish	MoFR	54,127	54,127	38,220	146,474
T 2.1	Y07-1011	Forest regeneration, growth and development under seven silvicultural systems	Louise de Montigny	MoFR	86,570	21,000	0	107,570
T 2.1	Y07-1262	Effects of partial retention and common mycorrhizal networks on seedling recruitment in Douglas-fir forests across British Columbia	Suzanne Simard	UBC	52,500	52,500	52,500	157,500
T 2.1	Y07-1285	Pothole Creek Study Area – Interior Douglas-fir uneven-aged stand development	Catherine Bealle Statland	MoFR	27,300	5,618	0	32,918
T 2.1	Y07-1001	Effects of variable retention on planted and natural regeneration in Coastal BC	N.J. Smith	Western Forest Products Inc.	28,350	28,350	0	56,700
T 3.0	Y07-1286	Defining boreal mixedwoods and exploring their response to management and natural disturbance (fire, MPB) through spatially-explicit ecosystem management modeling	J.P. (Hamish) Kimmins	UBC	71,400	71,400	55,650	198,450
T 4.1	Y07-1313	Analysis of insect, disease, and abiotic factors affecting post-free-growing lodgepole pine in southern interior British Columbia	Suzanne Simard	UBC	29,996	79,305	67,295	176,596
T 4.2	Y07-1061	Climatic influence on economic impacts of spruce bark beetle	Harry Swain	UVic	24,911	28,665	33,705	87,281
T 6.1	Y07-1163	Chanterelle mushroom habitat modeling and inventory	Tyson Ehlers	Tysig Ecological Research	27,720	22,365	50,085	100,170
T 6.2	Y07-1310	Developing molecular tools to help determine the effect of natural disturbance on pine mushroom (NTFP) distribution and sustainability	Bill Chapman	MoFR	68,250	68,250	0	136,500
T 6.2	Y07-1318	Understanding the spatial and quality attributes of culturally important non-timber forest product species in mountain pine beetle affected areas of the Cariboo-Chilcotin	Wendy Cocksedge	Royal Roads University	53,445	52,500	54,600	160,545

Topic	Project	Project Title	Proponent	Organization	2006/07 (\$)	2007/08 (\$)	2008/09 (\$)	Total (\$)
T 7.0	Y07-1316	Climate and outbreaks of western hemlock looper in coastal forests of British Columbia	Lori D. Daniels	UBC	25,279	10,763	0	36,041
T 7.0	Y07-1321	Development and analysis of forest health climate change databases for BC: western spruce budworm and Douglas-fir	Harry Swain	UVic	44,992	57,750	52,000	154,742

**Timber Growth and Value Program Recommendations— Continuing Projects (approved in 2005/06)**  
**TOTAL: \$613,345**

Topic	Project	Project Title	Proponent	Organization	2005/06 (\$)	2006/07 (\$)	2007/08 (\$)	Total (\$)
1.1: Complex stands	Y07-2141	Effects of the variable retention silvicultural systems on microclimate, establishment and growth of trees in west coast forests	Andy Black	UBC	42,000	42,000	0	84,000
1.1:	Y07-2028	Improving predictions of juvenile tree growth in complex mixtures for sustainable forest management	Suzanne Simard	UBC	26,250	19,999	0	46,249
1.1:	Y07-2080	Interactions between light and nitrogen availability on juvenile tree growth in partial cut forests	Marty Kranabetter	MoFR	24,365	26,408	63,546	114,319
1.1:	Y07-2148	Regeneration and stand structure following mountain pine beetle infestation in the sub-boreal spruce zone	David Coates	MoFR	76,188	69,888	0	146,076
2.1: Complex stands	Y07-2079	A study of stand growth, development, and structural biodiversity in complex and even-aged ESSF spruce-subalpine fir forests, 14 years after treatment ( <i>EP 1119.01 Lucille Mountain Project</i> )	Mike Jull	UNBC	23,583	11,445	0	35,028
2.1:	Y07-2075	Natural and artificial regeneration response to opening size and site preparation in a high elevation fir-spruce stand at Sicamous Creek	Alan Vyse	TRU	57,750	34,650	42,000	134,400
3.1: Complex stands	Y07-2051	Modelling boreal mixedwoods (spruce-aspen-pine) with TASS	George Harper	MoFR	48,930	44,100	31,500	124,530
3.1:	Y07-2088	TASS III: simulating the management, growth and yield of complex stands	Jim Goudie	MoFR	132,207	146,594	38,745	317,546
4.1: Stand and forest dynamics following MPB	Y07-2072	A framework for documenting the effects of the mountain pine beetle outbreak in sub-boreal forests of northern B.C.	Craig Delong	MoFR	50,400	31,185	120,625	202,210
4.1:	Y07-2003	Determining susceptibility of young pine plantations to the mountain pine beetle, <i>Dendroctonus ponderosae</i> , and manipulating future stands to mitigate losses	Lorraine Maclauchlan	MoFR	92,085	80,197	0	172,282

Topic	Project	Project Title	Proponent	Organization	2005/06 (\$)	2006/07 (\$)	2007/08 (\$)	Total (\$)
4.1:	Y07-2184	Predicting advanced regeneration density in lodgepole pine stands in the northern interior of British Columbia	Philip Burton	NRCan	38,745	52,920	0	91,665
4.2: Estimating losses	Y07-2169	Incorporating the effects of windthrow after variable retention harvesting into TASS and TIPSYS	Mario Di Lucca	MoFR	87,560	53,960	0	141,519

**Timber Growth and Value Program Recommendations—Continuing Projects (approved in 2004/05)**  
**TOTAL: \$1,705,296**

Topic	Project	Project Title	Proponent	Organization	2004/05 (\$)	2005/06 (\$)	2006/07 (\$)	Total (\$)
5-1: Managing complex forests	Y07-3092	Light and tree growth in complex forest stands	David G. Simpson	MoFR	71,925	74,550	59,850	206,325
5-2: Silvicultural systems and treatments for productivity of complex stands	Y07-3022	Competitive effects of broadleaf trees on conifer performance over a range of ecosystems	Teresa Newsome	MoFR	87,061	98,847	67,872	253,780
5-2	Y07-3043	Shelterwood silvicultural systems to address integrated resource management issues	Michaela Waterhouse	MoFR	90,527	98,981	50,085	239,593
5-2	Y07-3065	Effects of young stand silviculture on conifer/broadleaf mixtures in seral ICH forests of southern interior BC	Suzanne Simard	UBC	80,955	30,000	11,277	122,232
5-2	Y07-3067	Predicting development and productivity of southern interior mixed species stands through calibration and modeling with SORTIE-BC	Suzanne Simard	UBC	55,283	46,998	46,998	149,279
5-2	Y07-3159	Management regimes for red alder plantations	Paul Courtin	MoFR	51,387	59,850	59,955	171,192
5-2	Y07-3305	Managing northern mixedwood stands to sustainably maximize productivity and minimize costs	Chris Hawkins	UNBC	74,232	89,222	90,240	253,694
5-3: Site prescriptions for full growth potential	Y07-3021	Expert system for making site preparation and vegetation management decisions in southern interior B.C.	Donald Sachs	Consultant	68,078	13,000	10,000	91,078
5-3	Y07-3101	Effects of intensive fertilization on timber and non-timber resources	Robert Brockley	MoFR	118,335	91,841	102,987	313,164
5-3	Y07-3190	SCHIRP: ecology and management of ericaceous shrub-dominated ecosystems in coastal BC	Cindy Prescott	UBC	75,950	79,801	79,799	235,550

Topic	Project	Project Title	Proponent	Organization	2004/05 (\$)	2005/06 (\$)	2006/07 (\$)	Total (\$)
5-3	Y07-3210	Sulphur fertilization of lodgepole pine – A stable isotope tracer study	Rob Brockley	MoFR	69,510	3,440	3,439	76,389
5-4: Silviculture systems and treatments for forest health and wildfire	Y07-3138	Vole population and seedling damage monitoring with diversionary feeding methods	Thomas P. Sullivan	UBC	48,300	48,300	48,300	144,900
5-4	Y07-3184	New egg survey method for population assessments of the western hemlock looper ( <i>Lambdina fuscicornis</i> ) (Lepidoptera: Geometridae)	Art Stock	MoFR	35,739	30,000	30,001	95,739
5-4	Y07-3203	Genetic variation in the foliar pathogen <i>Dothistroma septospora</i> and relationship to toxin production	Kathy J. Lewis	UNBC	33,763	27,901	7,800	69,463
5-4	Y07-3204	Relationships between climate, forest practices and incidence of <i>Dothistroma septospora</i>	Kathy J. Lewis	UNBC	29,146	46,488	23,770	99,404
5-5: Better seed sources/species selection	Y07-3364	Comandra rust screening in Bulkley Valley lodgepole pine	Jeff Gillanders	Babine Forest Products	30,525	0	10,000	40,525
6-2: Maintain or enhance economic viability	Y07-3005	Evaluating large-scale forest zoning to improve the efficiency of timber production and biodiversity objectives	Fred L. Bunnell	UBC	74,288	74,289	82,688	231,264
6-2	Y07-3294	Forest management in interior British Columbia: moving beyond equivalent cut area (ECA)	Younes Alila	UBC	94,511	95,000	95,000	284,510
6-3: Predicting production effects	Y07-3286	Montane Alternative Silvicultural Systems (MASS): growth limitations on regeneration	Alan K. Mitchell, Ph.D.	NRCan	43,995	44,100	45,045	133,140
6-4: Optimize timber qualities	Y07-3183	Identification and propagation of novel value-added hardwood varieties	Jim Mattsson	SFU	33,653	33,180	35,000	101,832
7-2: Effects of management practices	Y07-3024	Long-term effects of vegetation management treatments on growth and yield and stand development	W. Jean Mather	Skyline Forestry Consultants	86,312	68,408	73,500	228,220
7-2	Y07-3090	Sustainable mixedwood management in the Sub-Boreal Spruce Zone of British Columbia	Chris Hawkins	UNBC	76,581	74,981	72,000	223,561
7-2	Y07-3102	Stand management growth and yield field experiments in the B.C. Interior	Robert Brockley	MoFR	107,100	88,425	148,997	344,522
7-2	Y07-3156	Stand management cooperative - growth and yield installations in BC	Louise de Montigny	MoFR	56,625	54,998	55,000	166,623
7-2	Y07-3266	Coastal stand management growth and yield field experiments	Louise de Montigny	MoFR	146,924	148,200	148,200	443,325
7-2	Y07-3290	Modelling the impact of stand management regimes on the wood characteristics of lodgepole pine	Jim Goudie	MoFR	194,565	121,000	121,000	436,565

Topic	Project	Project Title	Proponent	Organization	2004/05 (\$)	2005/06 (\$)	2006/07 (\$)	Total (\$)
7-3: Continued development of SIBEC and other tools	Y07-3071	SIBEC site index estimates	Shirley Mah	MoFR	102,795	99,540	96,495	298,830
7-5: Use of various molecular technologies	Y07-3110	Evaluating the protocol for quantifying the effect of pollen contamination on the genetic worth of conifer seed orchards	John (Joe) E. Webber	ProSeed Consulting	30,030	30,000	30,000	90,030

**Proponent-driven Project Recommendations (2006/07) TOTAL: \$68,040**

Project	Project Title	Proponent	Organization	2006/07 (\$)	2007/08 (\$)	2008/09 (\$)	Total (\$)
Y07-1280	Studying mountain pine beetle dispersal patterns through analysis of genetic markers: investigation of population structure and examining current dispersal assumptions	Brent W. Murray	UNBC	15,750	15,750	0	31,500
Y07-1270	Predicting the responses of interior Douglas-fir to climate change in B.C.	Scott Green	UNBC	21,315	17,115	0	38,430
Y07-1046	Book preparation: <i>Ecology, conservation and management of British Columbia's inland rainforest</i>	Darwyn Coxson	UNBC	30,975	23,625	10,500	65,100

**Proponent-driven Project Recommendations—Continuing Projects (approved in 2005/06) TOTAL: \$14,700**

Project	Project Title	Proponent	Organization	2005/06 (\$)	2006/07 (\$)	2007/08 (\$)	Total (\$)
Y07-2107	Predicting the growth responses to climate change among co-occurring, major tree species in B.C.	Scott Green	UNBC	17,850	14,700	0	32,550

**Mountain Pine Beetle Project Recommendations—Sustainability Projects TOTAL: \$442,699**

Topic	Project	Project Title	Proponent	Organization	2006/07 (\$)	2007/08 (\$)	Total (\$)
S 1.3	M07-5006	Landscape strategies for mountain pine beetle management: some stewardship implications	J. Douglas Steventon	Bulkley Valley Centre	49,350	10,500	59,850
S 1.3	M07-5037	Implications on grizzly bears and moose of forest management in response to the 1970s mountain pine beetle infestations in the Flathead Drainage	Bruce McLellan	MoFR	93,219	55,818	149,037
S 1.4	M07-5047	Effects of a mountain pine beetle epidemic on northern caribou habitat use, migration and population status	Deborah Cichowski	Bulkley Valley Centre	38,850	38,850	77,700
S 1.6	M07-5035	Measurement and modelling of mountain pine beetle impacts on the annual forest water balance	Darryl Carlyle-Moses	TRU	56,425	26,666	83,091
S 1.6	M07-5036	Using GIS and Time Series Analysis to evaluate impacts of large-scale salvage logging on hydrology in the BC Interior	Adam Wei	UBC	51,660	0	51,660
S2.6	M07-5039	Peak flow and water yield responses to mountain pine beetle infested and salvage-logged watersheds	Younes Alila	UBC	84,945	84,420	169,365
S 4.1	M07-5048	Assessing the threat of mountain pine beetle outbreaks to whitebark pine in British Columbia	Elizabeth Campbell	Consultant	68,250	66,150	134,400

**Mountain Pine Beetle Project Recommendations—Timber and Harvesting Projects TOTAL: \$1,115,969**

Topic	Project	Project Title	Proponent	Organization	2006/07 (\$)	2007/08 (\$)	Total (\$)
T 4.1	M07-5001	Density and distribution of advance regeneration in the MS biogeoclimatic zone in relation to site moisture and overstory density	Gordon Nigh	MoFR	51,503	28,403	79,906
T 4.1	M07-5010	Development of residual trees and regeneration following MPB attack in thinned lodgepole pine stands	Robert P. Brockley	MoFR	40,950	19,950	60,900
T 4.1	M07-5015	Modeling natural regeneration in mountain pine beetle impacted stands	Peter Marshall	UBC	75,915	75,915	151,830
T 4.1	M07-5020	Predicting development and productivity of southern interior mixed species stands following mountain pine beetle attack	Suzanne Simard	UBC	57,855	67,883	125,738
T 4.1	M07-5024	Mountain pine beetle impacts on young age class pine leading stands in the SBS biogeoclimatic zone	Chris Hawkins	UNBC	56,763	49,888	106,651
T 4.1	M07-5044	Stand dynamics following mountain pine beetle outbreaks in central British Columbia	René Alfaro	NRCan	66,150	63,000	129,150
T 4.1	M07-5045	Balancing disturbances in forest management	V.G. Nealis	NRCan	44,100	50,400	94,500

Topic	Project	Project Title	Proponent	Organization	2006/07 (\$)	2007/08 (\$)	Total (\$)
T 4.1	M07-5046	Stand and forest dynamics following MPB: how spatial patterns of salvage harvesting affect Warren root collar weevil pressure in regenerating stands	Brian H. Aukema	UNBC	50,505	50,505	101,010
T 4.1	M07-5049	Response of woodland caribou to partial retention logging of winter ranges attacked by mountain pine beetle	Dale Seip	MoFR	91,350	77,700	169,050
T 4.3	M07-5004	Enhancing early stand growth through the use of vegetation management – 15 year post-treatment results	George Harper	MoFR	13,755	3,150	16,905
T 4.3	M07-5009	Identification of young pine stands at high risk to mountain pine beetle through an integration of GIS analysis and field evaluation techniques	Lorraine Maclauchlan	MoFR	49,875	39,375	89,250
T 4.3	M07-5012	Treatment of repressed lodgepole pine stands	Teresa Newsome	MoFR	58,591	84,367	142,958
T 4.3	M07-5018	Evaluation of the impact of N fertilization on mountain pine beetle success in mature lodgepole pine stands at the leading edge of an infestation.	John McLean	UBC	57,131	53,088	110,219
T 5.3	M07-5023	Rating options for post-attack cutting on affected stands	Bruce C. Larson	UBC	43,260	0	43,260
T 5.3	M07-5025	A strategic analysis framework for managing forests under the mountain pine beetle outbreak	Don Morgan	MoFR	75,910	75,910	151,820
T 5.3	M07-5040	Moving towards a desirable future: developing and evaluating alternative MPB salvage strategies in the Prince George Forest District	Kerry Deschamps	Canfor	69,300	0	69,300
T 10	M07-5016	Mountain pine beetle red attack shelf life discriminations	Arthur Roberts	SFU	72,450	72,450	144,900
T 10	M07-5019	Evaluating forest road construction techniques to improve access to stands affected by mountain pine beetle	Doug Bennett	FERIC	38,010	38,010	76,020
T 10	M07-5032	Developing new techniques, systems and equipment for harvesting post mountain pine beetle stands	Tony Sauder	FERIC	102,596	103,370	205,966

### Recommendations—Long-Term Research Installations **TOTAL: \$893,337**

LTRI	Project Title	Proponent	Organization	2006/07 (\$)	2007/08 (\$)	2008/09 (\$)	Total (\$)
L07-7010	Coal Mine Road Research Installation (EP.972.03)	Chris Hawkins	UNBC	5,649	0	0	5,649
L07-7011	Alex Fraser Research Forest	Cathy Koot	UBC	36,367	0	0	36,367
L07-7012	Malcolm Knapp Research Forest (MKRF)	Ionut Aron	UBC	38,220	0	0	38,220
L07-7013	Silvicultural treatments for ecosystem management in the Sayward – Installation 2 Elk Bay (STEMS 2)	Louise de Montigny	MoFR	31,729	0	0	31,729

LTRI	Project Title	Proponent	Organization	2006/07 (\$)	2007/08 (\$)	2008/09 (\$)	Total (\$)
L07-7014	Date Creek silvicultural systems trial	K. David Coates	MoFR	24,413	0	0	24,413
L07-7015	Long-term boreal mixedwood studies	Chris Hawkins	UNBC	7,488	0	0	7,488
L07-7016	Long-term sub-boreal mixedwood studies	Chris Hawkins	UNBC	27,086	0	0	27,086
L07-7019	Alternative silviculture systems on steep sloped old-growth forests on the Queen Charlotte Islands (Gregory/Hangover Creeks installations)	Roderick W. Negrave	MoFR	12,705	0	0	12,705
L07-7027	Aleza Lake Research Forest	Mike Jull	Aleza Lake Research Forest Society	39,757	0	0	39,757
L07-7017	PROBE (P <u>R</u> otocol for O <u>p</u> erational B <u>r</u> ushing E <u>v</u> aluations)	Suzanne Simard	UBC	29,400	9,450		38,850
L07-7026	Northern Wetbelt Silvicultural Systems Project	Michael Jull	Aleza Lake Research Forest Society	19,688	15,488	0	35,176
L07-7001	Carnation Creek Experimental Watershed	Peter J. Tschaplinski	MoFR	56,700	36,750	21,000	114,450
L07-7002	Rennell Sound Project	Paul Marquis	MoFR	15,750	10,500	15,750	42,000
L07-7003	Long-term soil productivity study	Shannon M. Berch	MoFR	22,831	20,003	20,003	62,837
L07-7004	Group selection systems to maintain caribou habitat in high-elevation forests (ESSFwc3) in central BC	Michaela Waterhouse	MoFR	12,162	9,794	11,301	33,257
L07-7005	Silvicultural systems to maintain northern caribou habitat in lodgepole pine forests in central BC	Michaela Waterhouse	MoFR	31,946	10,655	23,785	66,386
L07-7006	Shelterwood silvicultural systems to address integrated resource management issues (EP1186, EP1104.01, & EP1191)	Michaela Waterhouse	MoFR	22,332	20,718	18,350	61,400
L07-7007	St. Mary's Residual Basal Area Study in a mixed conifer stand	Michaela Waterhouse	MoFR	13,023	9,686	6,996	29,705
L07-7008	Flathead Research Installation	Bruce McLellan	MoFR	22,575	22,575	22,575	67,725
L07-7009	Sicamous Creek Silvicultural Systems Project	Alan Vyse	TRU	66,150	58,800	48,300	173,250
L07-7018	Conifer/broadleaf mixture experiments in the southern interior of BC	Suzanne Simard	UBC	32,624	15,750	15,750	64,124
L07-7020	The Upper Penticton Cr. Watershed Experiment (LTRI 1059)	Rita Winkler	MoFR	57,750	63,000	63,000	183,750
L07-7021	Long-term evaluation of impacts of wildfire and mountain pine beetle infestation on in-stream wood recruitment and transport processes	Adam Wei	UBC	30,450	10,500	10,500	51,450
L07-7022	Interior stand management experiments	Robert P. Brockley	MoFR	17,850	15,750	16,800	50,400

LTRI	Project Title	Proponent	Organization	2006/07 (\$)	2007/08 (\$)	2008/09 (\$)	Total (\$)
L07-7024	Montane Alternative Silviculture Systems (MASS)	A.K. Mitchell	NRCan	35,175	16,800	16,800	68,775
L07-7029	Pothole Creek Study Area	Catherine Bealle Statland	MoFR	2,331	2,625	2,625	7,581
L07-7030	EP987.05 Westwold – Natural regeneration studies in partially cut interior Douglas-fir	Catherine Bealle Statland	MoFR	5,775	5,250	5,775	16,800
L07-7031	UBC Malcolm Knapp Research Forest Experimental Watersheds	M.C. Feller	UBC	59,236	38,850	7,350	105,436
L07-7032	Isobel dry-belt Douglas-fir management project	Walt Klenner	MoFR	37,840	8,400	5,250	51,490
L07-7033	The Opax Mountain long-term research installation	André Arsenault	MoFR	38,430	18,900	18,900	76,230
L07-7035	The Coastal Forest Chronosequence Sites	J.A. Trofymow	NRCan	11,550	15,750	11,550	38,850
L07-7036	Experimental Project (E.P.) 886.13 "Maximizing the Productivity of Managed Forests in the Interior of British Columbia"	Robert P. Brockley	MoFR	28,355	25,200	26,250	79,805